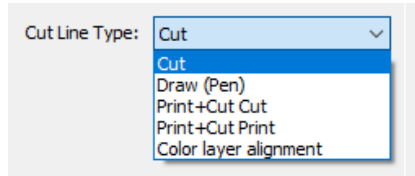


Understanding Cut Line Type in SCAL

By Sandy McCauley

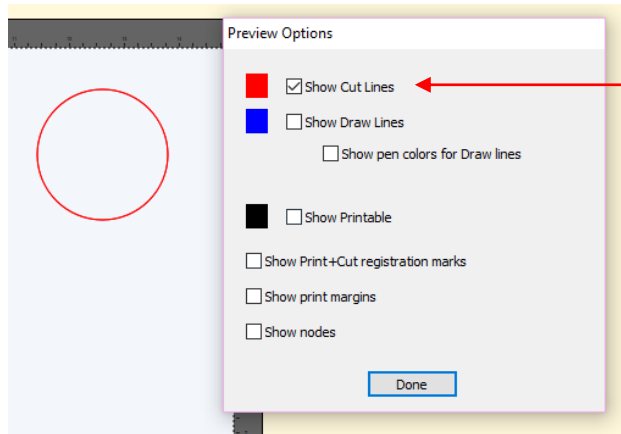
March 22, 2018

On the **Style Panel**, there are 4 options in the **Cut Line Type** menu for SCAL4 and 5 options for SCAL4 Pro:

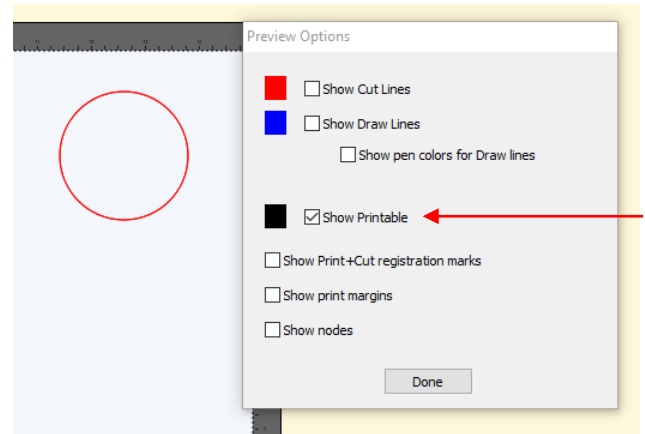


A. Cut

- This is the default assigned any time a new layer with vector shape(s) is added to the project.
- A layer assigned as **Cut** can be sent to your printer for printing and to your cutter for cutting.
- In the **Preview** window, mark either **Show Cut Lines** or **Show Printable** and the layer's shape(s) will appear with a red outline. Note that **Fill** color and **Stroke** color do not display:



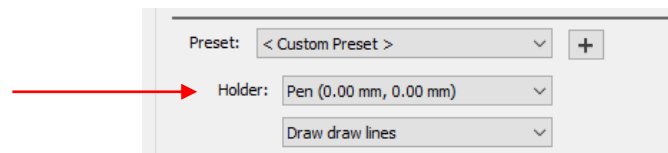
Mark **Show Cut Lines** and shapes that are assigned as **Cut** will appear with a red outline.



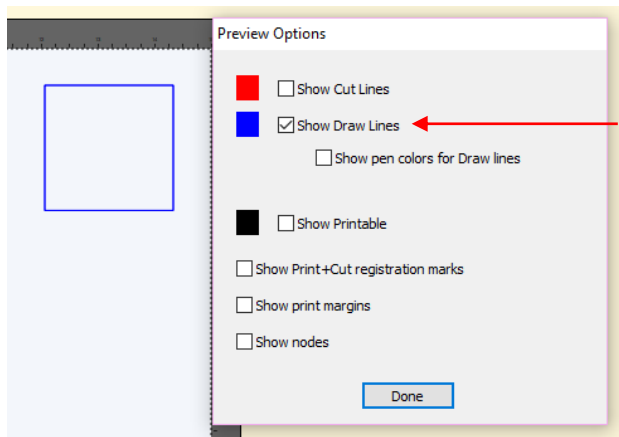
Mark **Show Printable** and shapes that are assigned as **Cut** will appear with a red outline.

B. Draw (Pen)

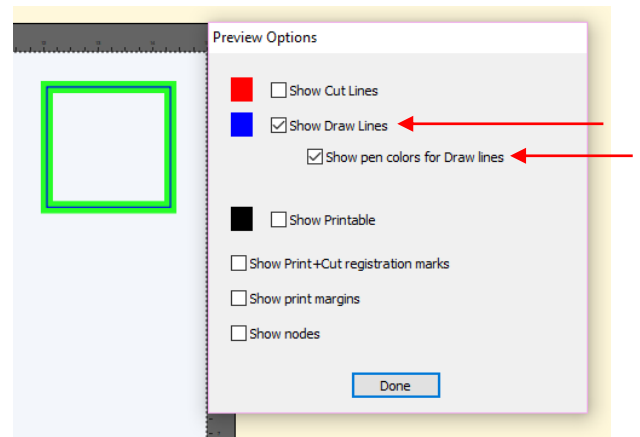
- Assign this option when you plan to use pens, glue pens, embossers, engravers, etc. on the assigned layer's shape(s).
- A layer assigned as **Draw (Pen)** cannot be sent to your printer.
- A layer assigned as **Draw (Pen)** will not be sent to your cutter unless you change the **Holder** setting to **Pen** in the **Cut Settings** window:



- In the **Preview** window, mark the option for **Show Draw Lines** and the layer's shape(s) will appear with a blue outline. If you also mark the option **Show pen colors for Draw lines**, the shape(s) will also display the **Stroke** color that's been assigned on the **Fill & Stroke Panel**.



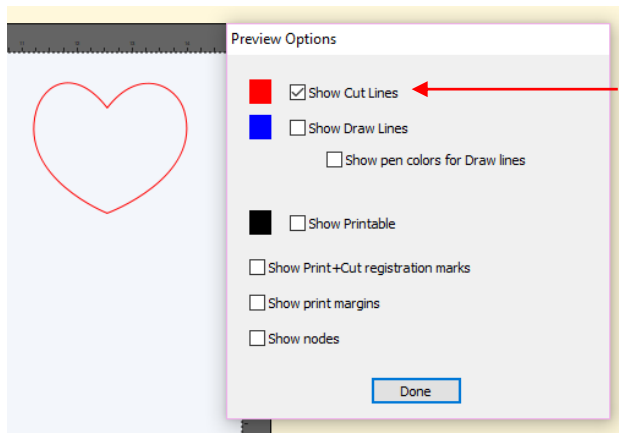
Mark **Show Draw Lines** and shapes that are assigned as **Draw (Pen)** will appear with a blue outline.



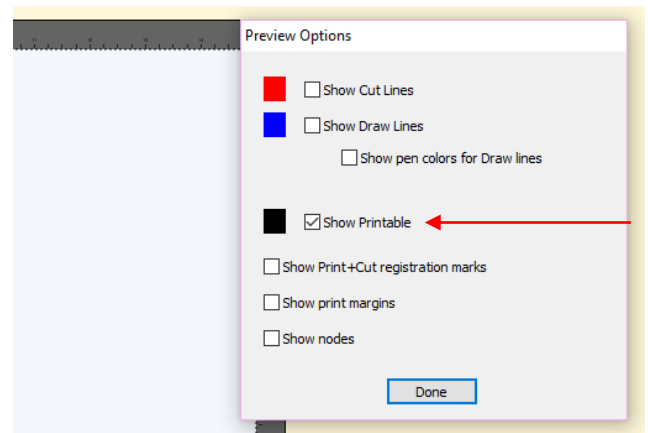
Also mark **Show pen colors for Draw lines** and the **Stroke** color will also be shown

C. **Print + Cut Cut**

- Assign this option when preparing a print and cut application and the layer's shape(s) will be cut.
- A layer assigned as **Print + Cut Cut** will not be sent to your printer.
- In the event you want that layer to be both printed and cut for your application, assign that layer as **Cut** instead.
- In the **Preview** window, mark the option for **Show Cut Lines** and the layer's shape(s) will appear with a red outline.



Mark **Show Cut Lines** and shapes that are assigned as **Print + Cut Cut** will appear with a red outline.

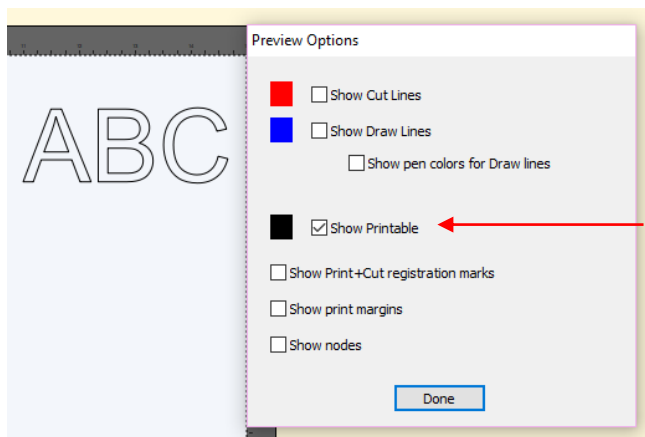


Mark **Show Printable** and shapes that are assigned as **Print + Cut Cut** will NOT appear and won't be printed.

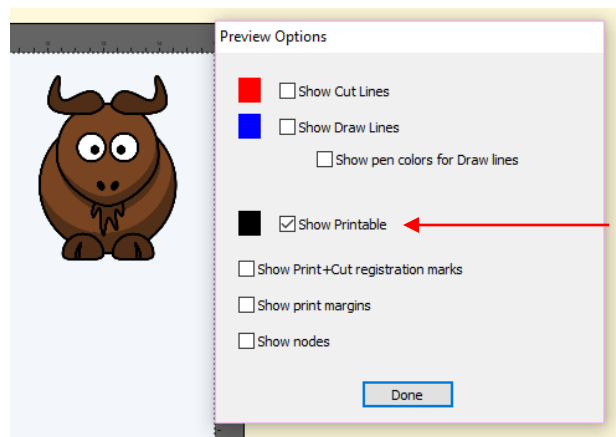
D. **Print + Cut Print**

- Assign this option when preparing a print and cut application and the layer's shape(s) will be sent to the printer.
- A layer assigned as **Print + Cut Print** will not be sent to your cutter.
- In the event you want that layer to be both printed and cut for your application, assign that layer as **Cut** instead. However, if the shape is a raster image that's been imported (e.g. JPG, PNG, BMP) its assignment automatically defaults to **Print + Cut Print** and cannot be changed.

- In the **Preview** window, mark the option for **Show Printable** and the layer's shape(s) will be appear with a black outline, if the shapes are vector objects. If the shape is an imported raster image (e.g. JPG, PNG, BMP), then it will display that full image:



Mark **Show Printable** and shapes that are assigned as **Print + Cut Print** will appear with a black outline.



Mark **Show Printable** and imported raster images will appear as they will be printed

E. Color Layer Alignment (Pro version)

- Assign this option when preparing a **Cut by Color** application and needing the layer's shapes to be cut each time it cuts one of the other colors in the **Cut by Color** window. These shapes are then used for alignment purposes in layered projects such as with vinyl.
- A layer assigned as **Color Layer Alignment** can be sent to your printer for printing and to your cutter for cutting.
- In the **Preview** window, the layer's shape(s) will appear with a purple outline. No options need to be marked.

