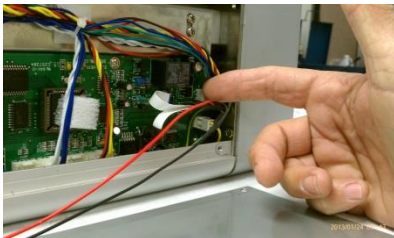


Zing Head Cable Replacement

1. Remove the bottom panel (4 screw-on rubber feet and two center screws)



2. Disconnect the fan power lead, and set the panel aside.



3. Remove the ground from the flat cable. Note: there is a blue mark on the flat cable for the ground. Unsolder the ground wire after removing the shrink wrap cover.



Remove the flat cable: you must unlock the connector before pulling the cable!



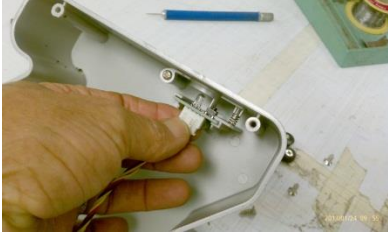
4. Remove side cover screws.



5. Open top cover, remove side cover screws.



6. Disconnect power button lead, and set the side cover aside.



7. Unsolder the four leads to the head board. The red is the LED with a ground (5v and G), and two for the head (M1 and M2), and remove the two fasteners holding the board to the fixing plate.



8. Pull the cable from the double-stick tape, and from the machine. Re-route the new cable, making sure to duplicate the placement such that the cable doesn't touch the side plate when the head is far left, but is not restricting the movement to the far right. Use a fresh piece of double-stick if needed, and reverse the removal procedure to finish installation. Be sure to unlock the cable connector before inserting the replacement cable to the board connector.

NOTE: The new cable is only one flat ribbon, and has no chips. Disregard the chips as they are no longer required. The ground that is left unattached from step 3 will be placed under one of the four board mounting plate fixing screws.