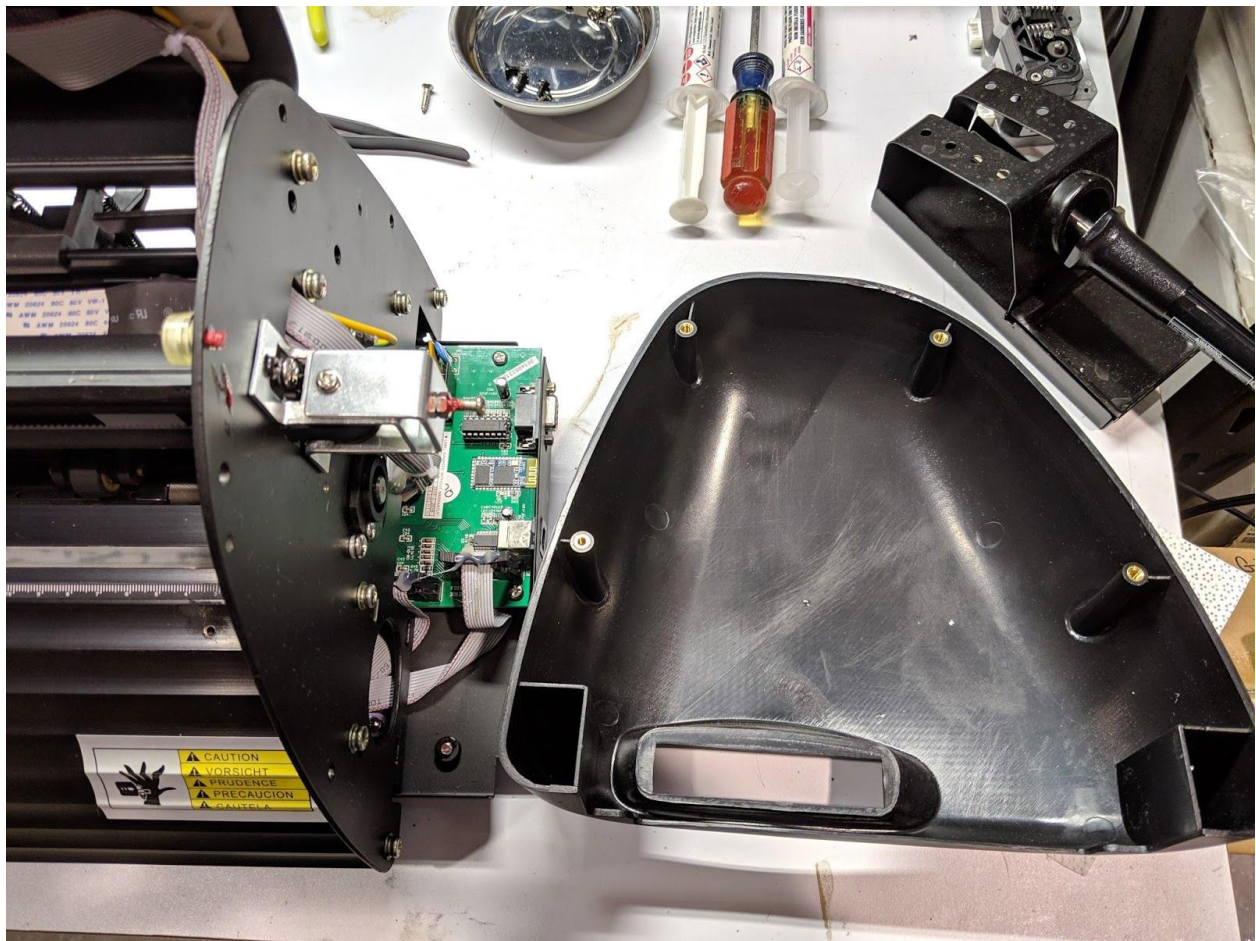


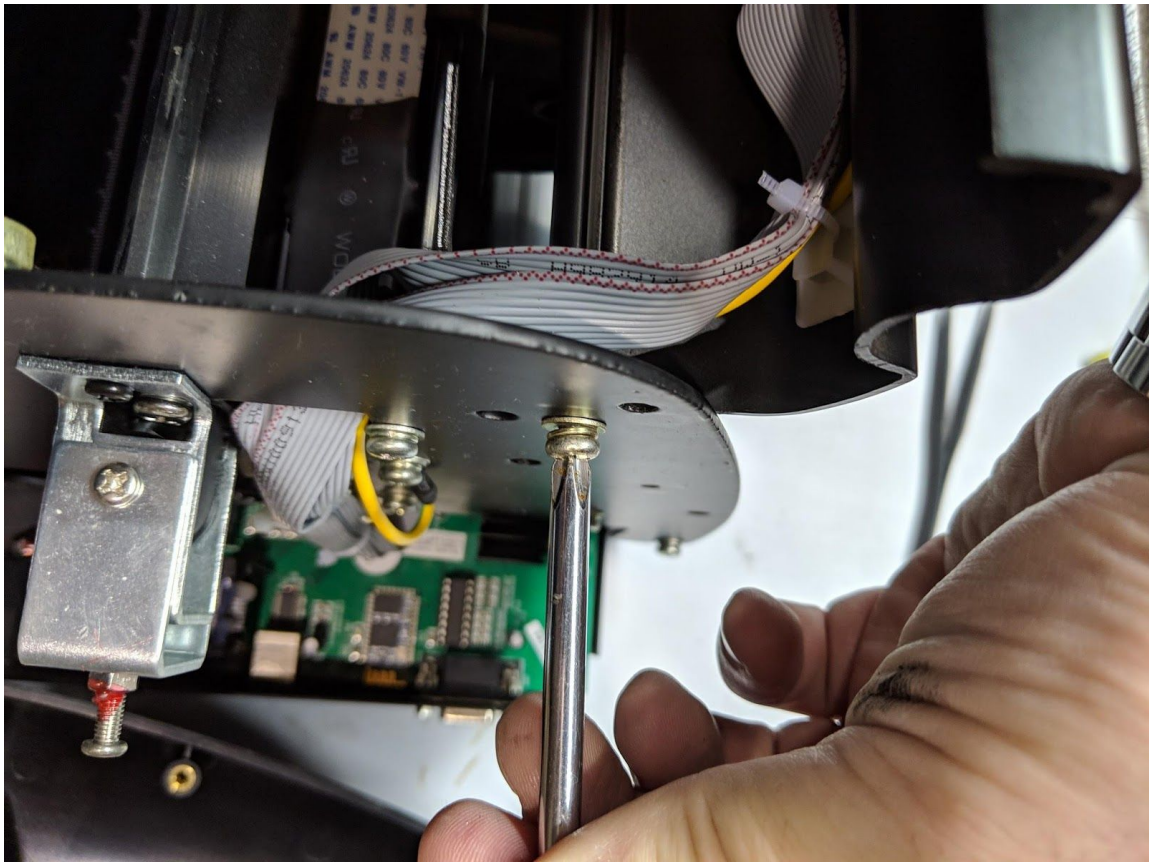
# KNK MAXX / MAXX Air Carriage Belt Instructions

Necessary tools: In order to swap out the carriage belt, you'll need a Philips and flat head screwdriver.

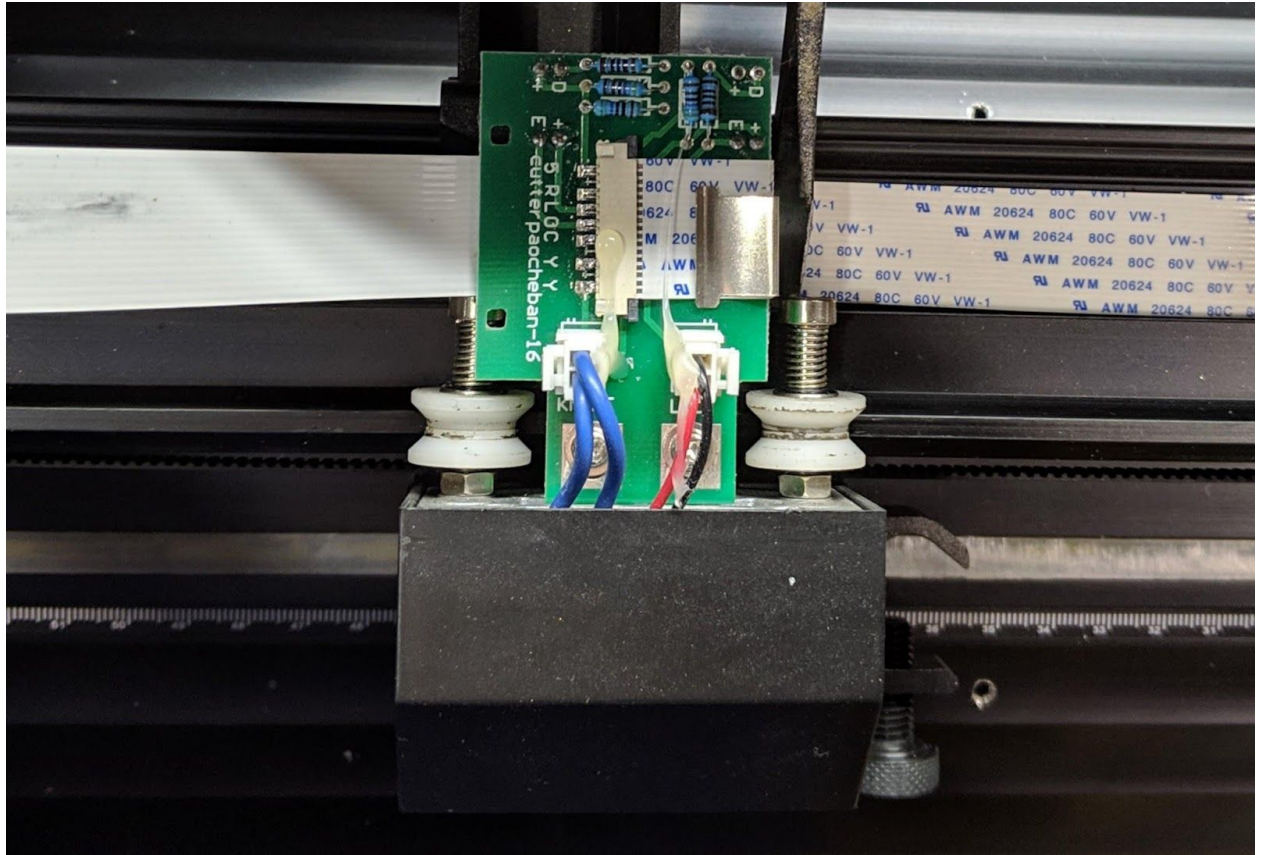
Step 1: Remove both left and right end caps need to be removed. There are 4 screws that hold each end cap in place.



Once both end caps have been removed, we need to detach the top cover. There are 2 screws on each side which hold the top cover in place. Remove the left-side and right-side screws. Allowing you to pull the top cover away from the machine. This provides access to the back of the cutting head.

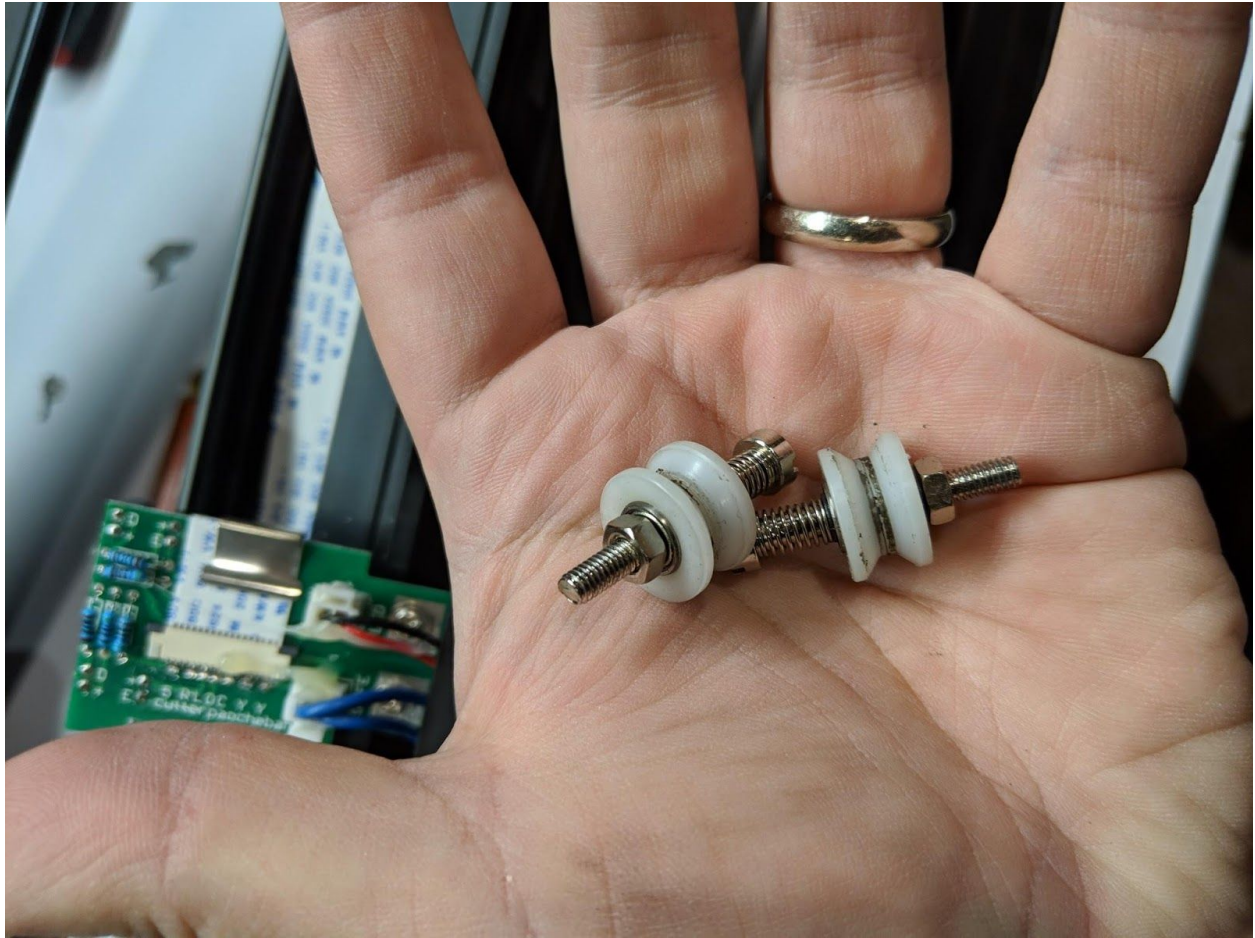


Once the top cover has been removed, the top two bearings need to be removed. These are both held in place with a flat head screw

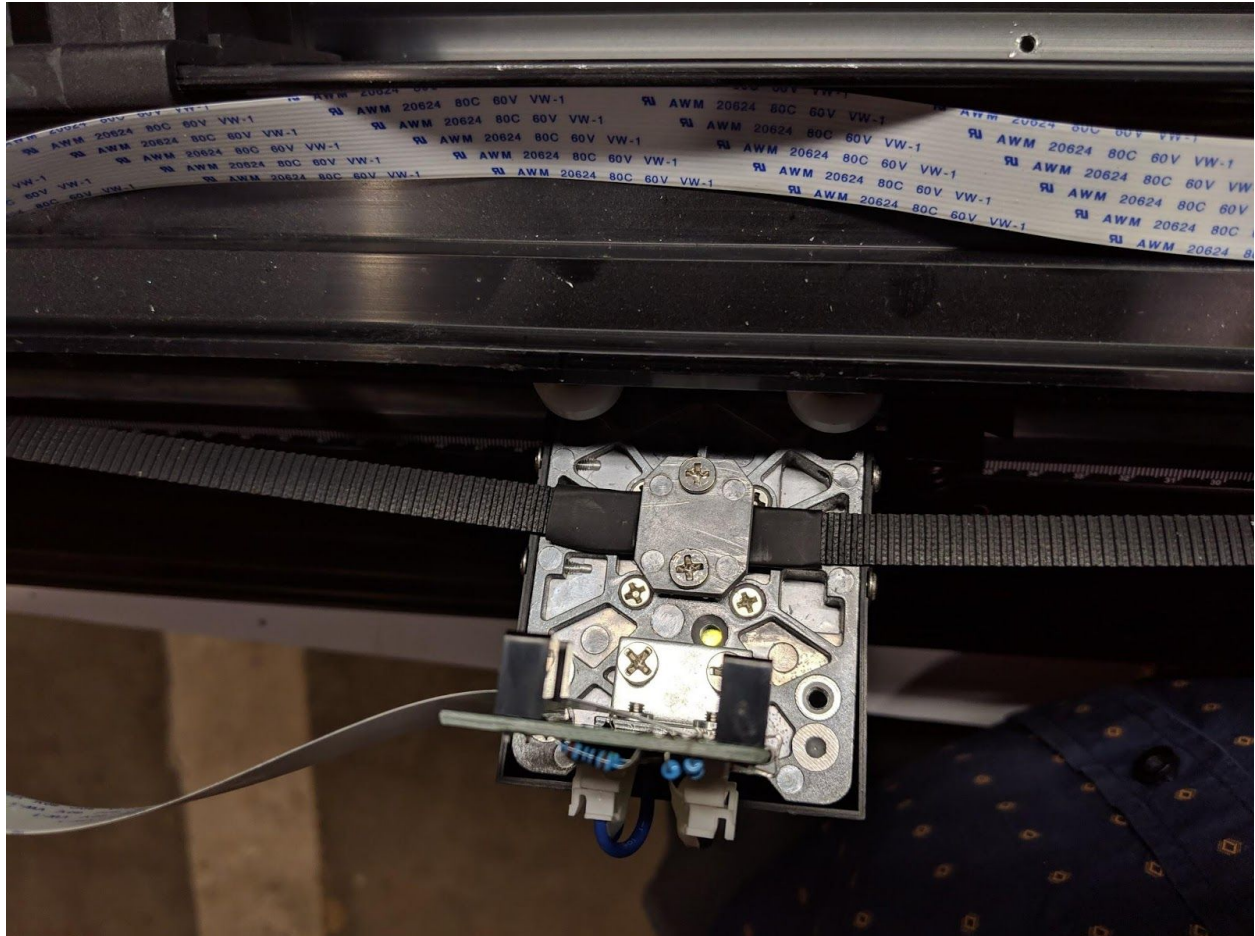




(Top head bearings removed)

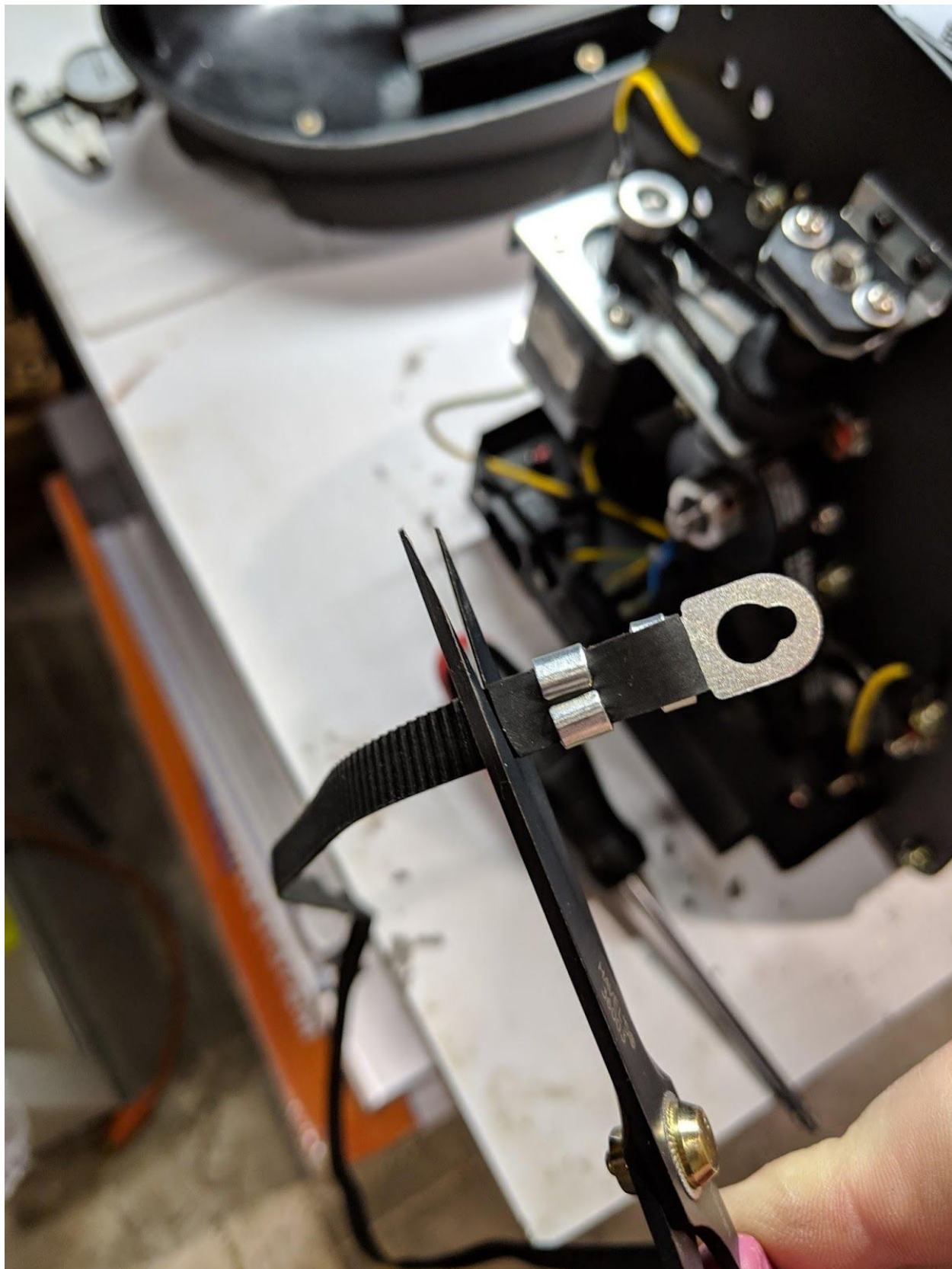


With both top bearings removed, the cutting head can be accessed. Rotate the top of the cutting head towards you, exposing the back side. You'll notice a small metal plate with two Phillips screws which pinch the carriage belt onto the cutting head. Remove these two screws, freeing the head from the belt

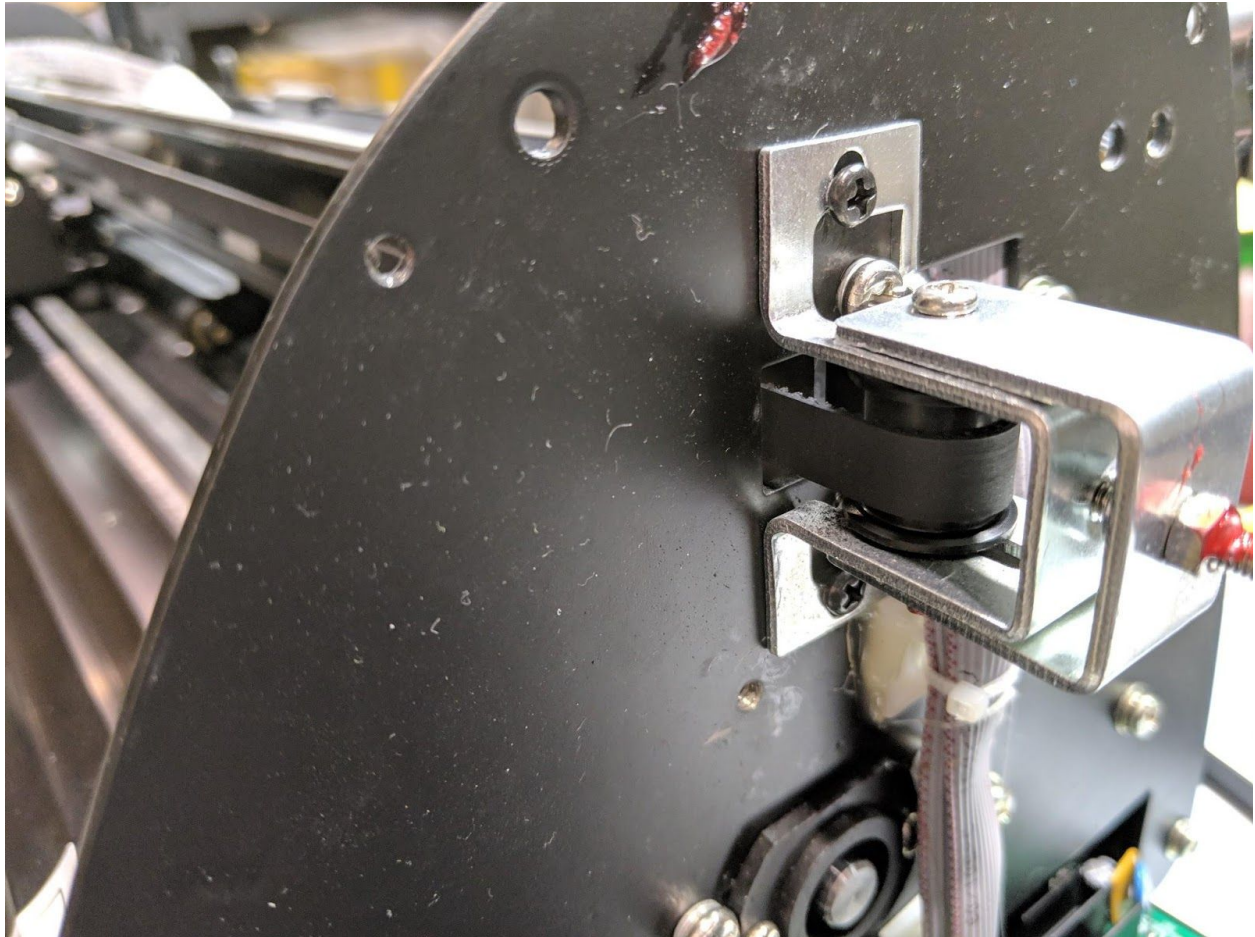


Depending on the release date of your MAXX/MAXX Air, you'll have one of two styles of carriage belts. The first has no fasteners attached to each end of the cable. If your machine has this style, you'll need to cut the ends of each belt, like in the image below:



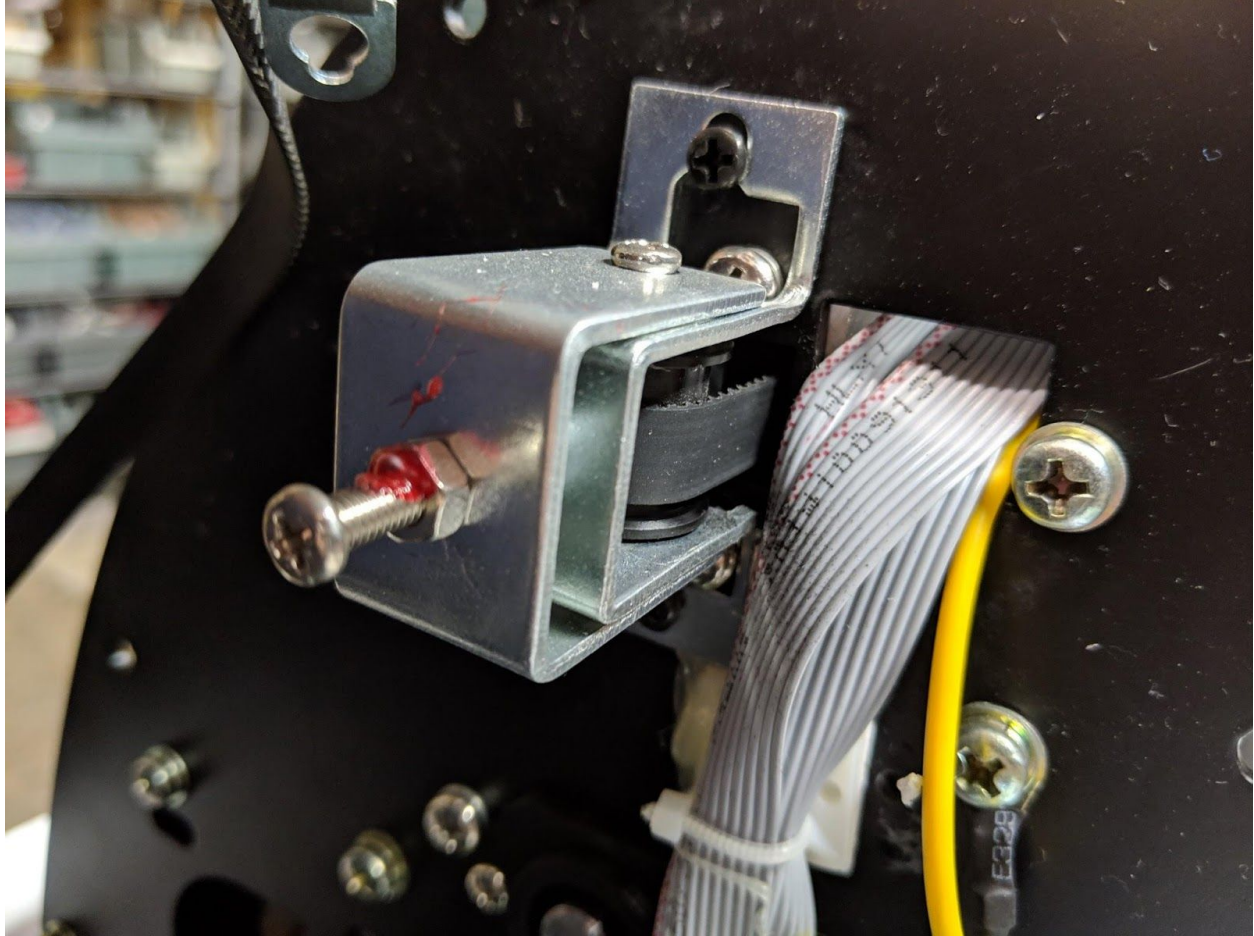


Once you have removed each fastener on the belt, feed one end of the belt through the gantry of the machine. Follow the same path that the existing belt travels (one end feeds through the inside of the gantry where the other is on the outside, and the front side of the gantry).



(Front Side)

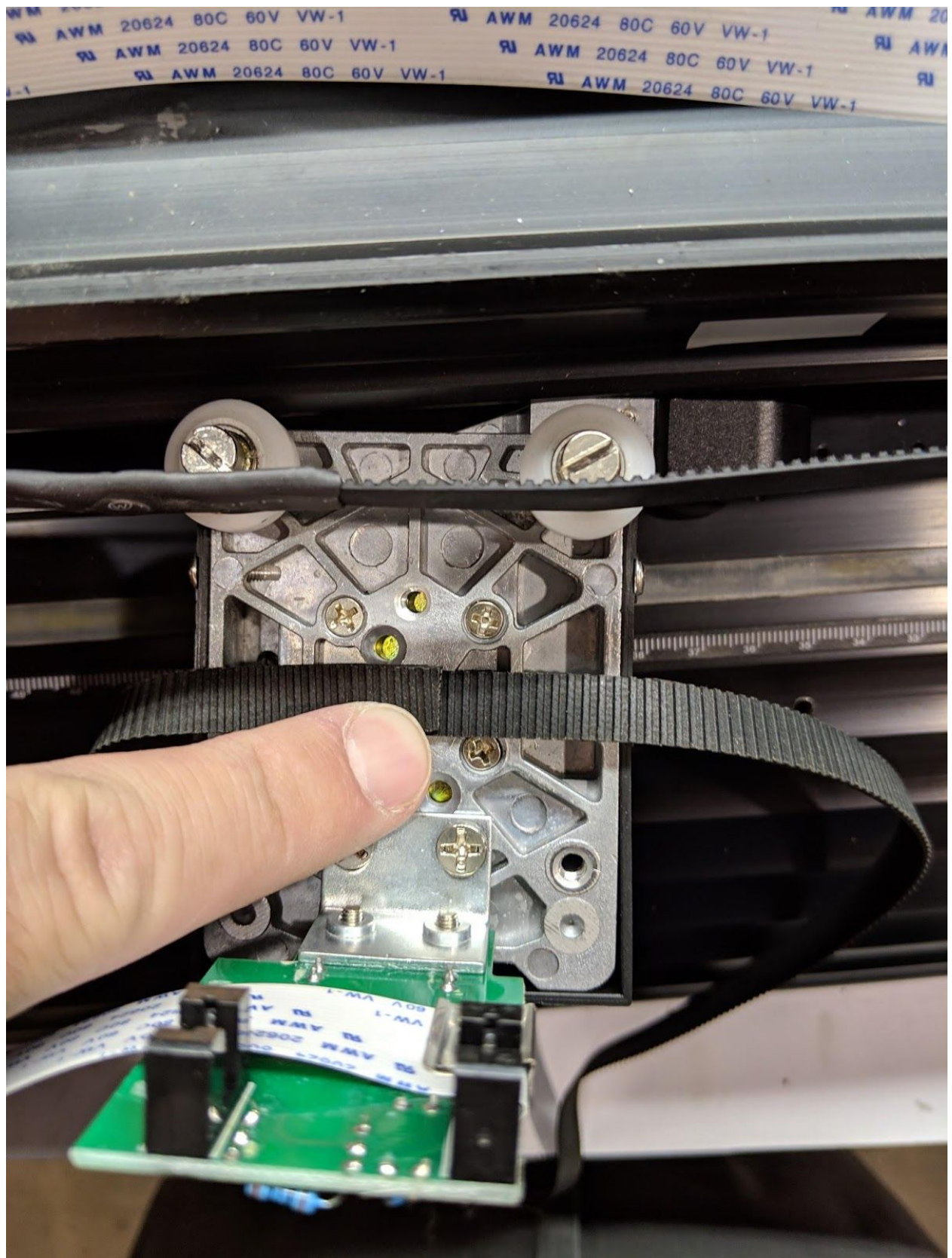




(Back Side)

Once you have replaced the old belt with the new one, you can attach it to the cutting head. If your belt-style has no fasteners, it will appear like image below:



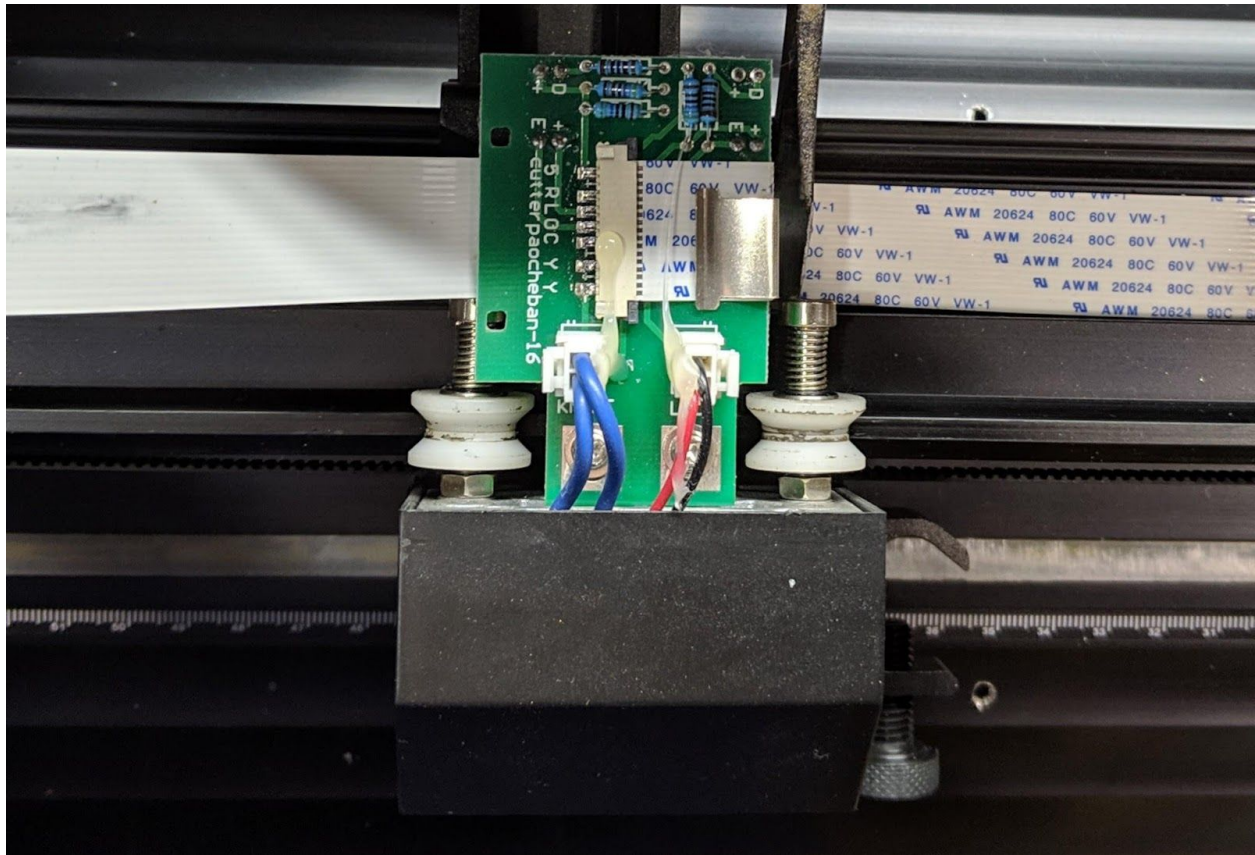


If your belt-style requires the two metal fasteners, it will attach like the image below. There will be 2 additional screws on both the left and right side, which hold the belt in place. Since the machine used for this documentation does not have said screws, I have placed each side in the general location of each side.

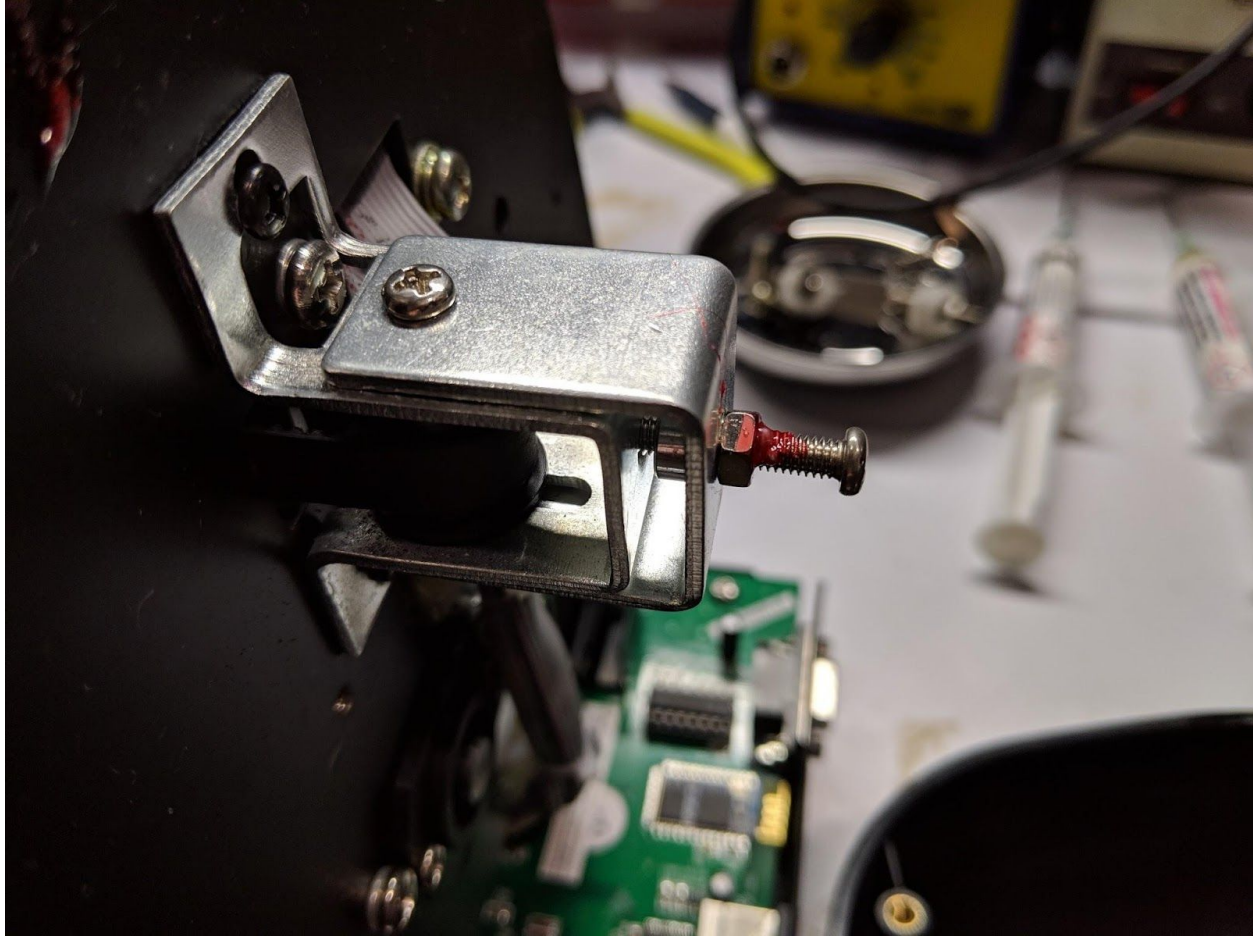




Reattach the small plate with the two screws over the belt, pinching it back onto the cutting head. Once in place, the head can be put back onto the gantry, and the two top bearings can be screwed back onto the head. Be sure to tighten these, making sure the two nuts are flush with the back of the cutting head.



With the cutting back on, the top cover can now be fastened back onto the cutter. Before reattaching the end caps, make sure that the carriage belt is tight enough. It doesn't need to be incredibly tight, but it should not be loose enough where it "droops down". If the belt requires more or less tension, it can be adjusted by tightening or loosening the tensioner screw on the right side of the machine (shown below).



Once complete, the end caps can be fastened back to the machine, and your KNK MAXX/MAXX Air should be operational.