

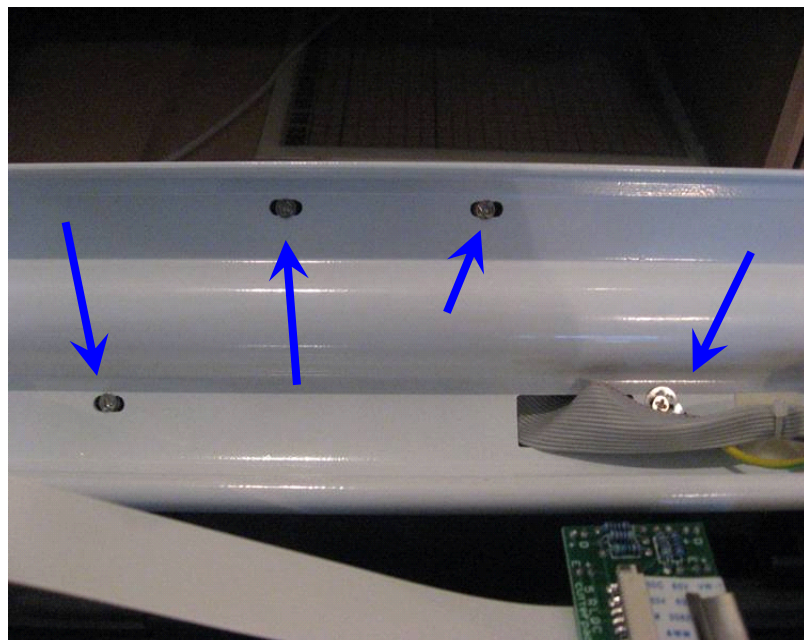
How to Fix Buttons That Are Not Working Easily

What you need: A clean eraser (such as a pencil eraser) and a screwdriver (such as the one that came with your KNK, or ACS).

- Flip up the top of the machine. You may find it easier to lift one side at a time. The lid is held down tightly so you'll need to use some force to pop it up. (On the Eagle this step is not necessary):



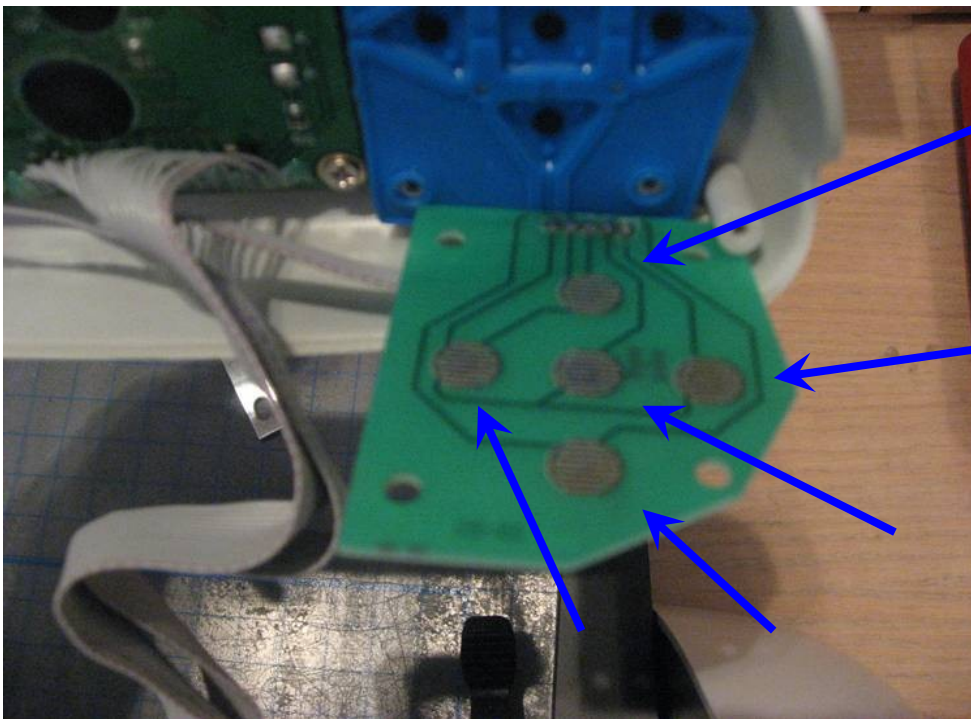
- Remove all four screws under the top (note that mine is the white 15" Maxx whereas you may have the black 24" Maxx or even the handheld control panel on the Eagle).



- Remove the 4 screws from the far right side:



- Using an eraser, rub/clean the five gold circles on the green panel which come into contact with the buttons.



- Reassemble and test.