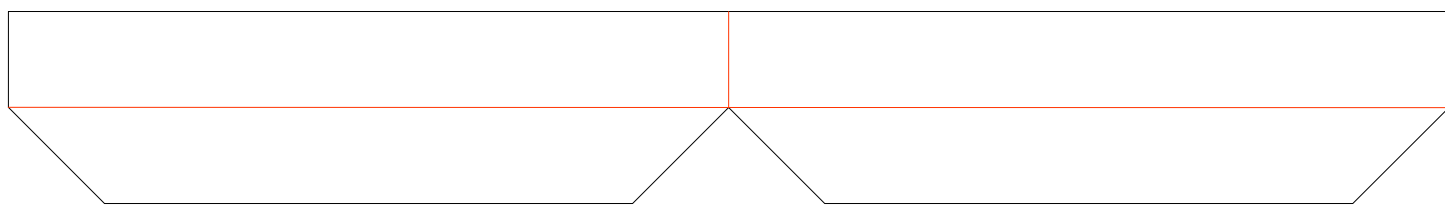
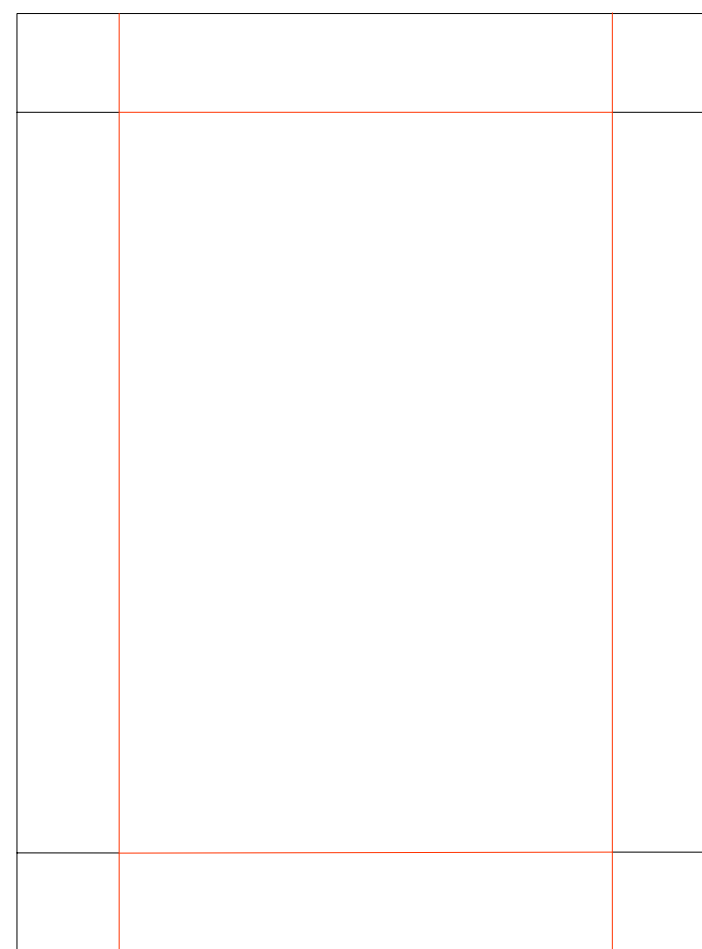
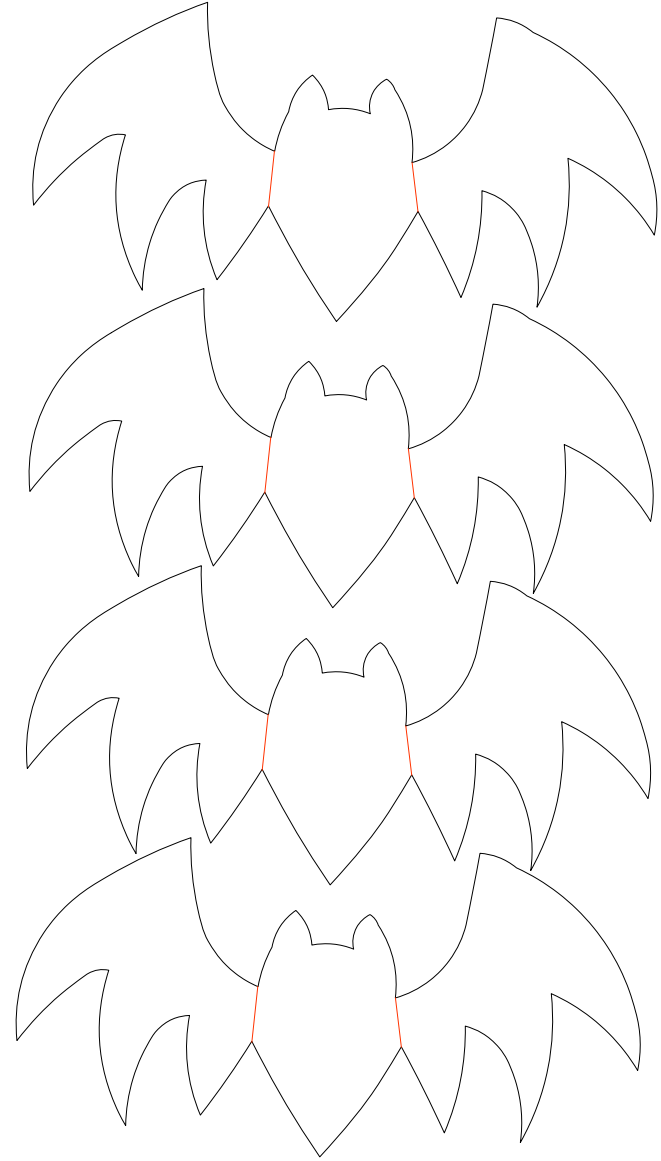
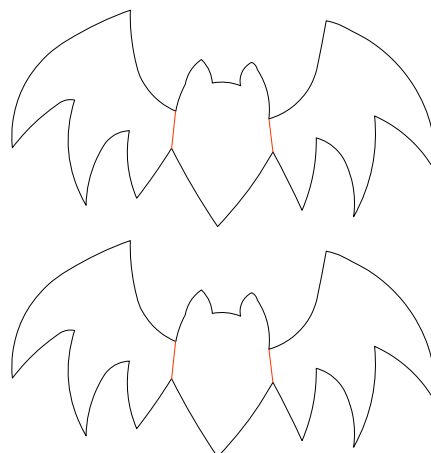
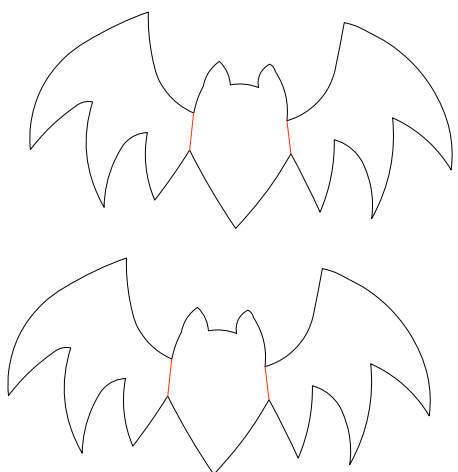
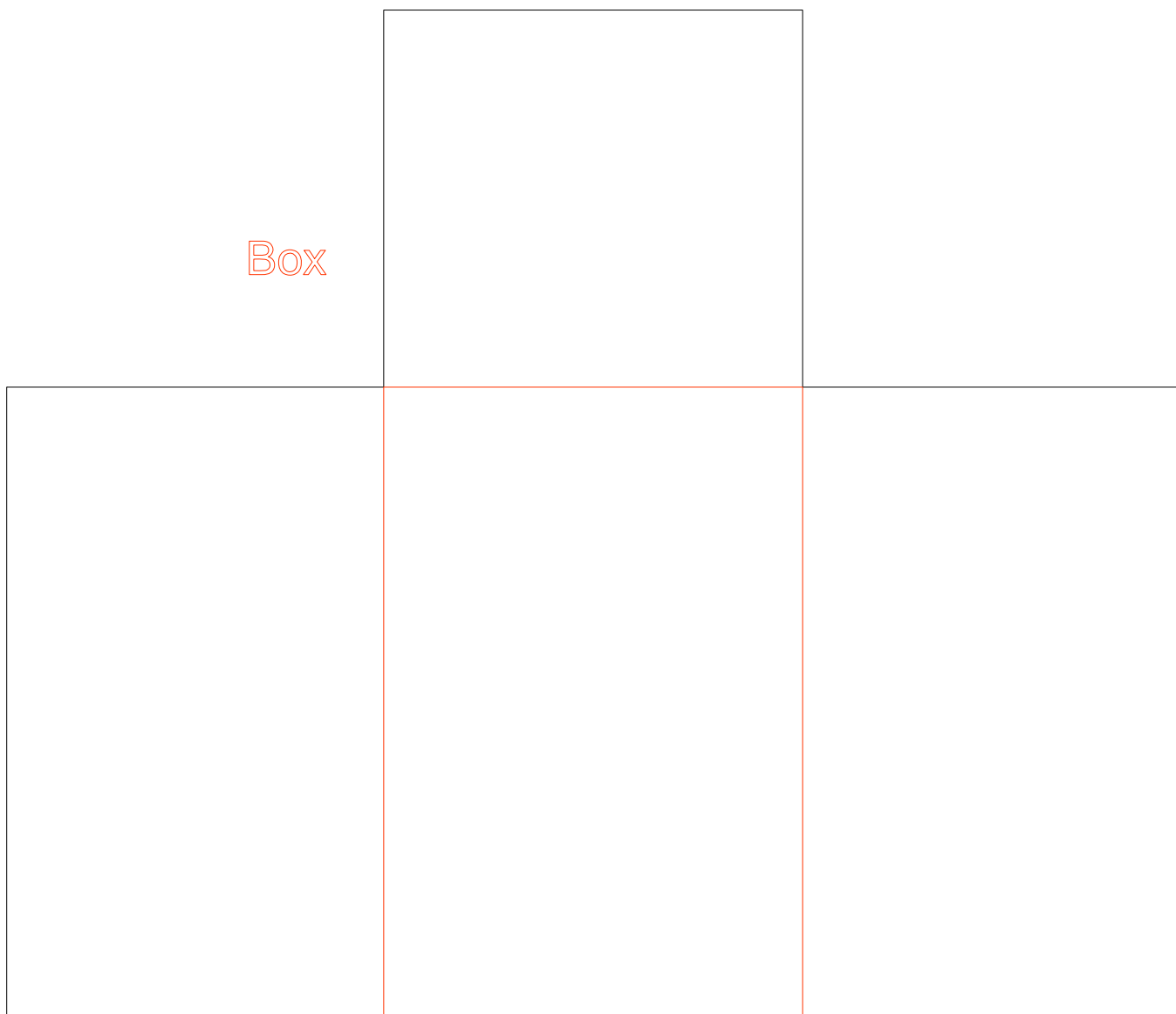


Gift Card Sleeve



Box



Lid

© 2011 Susan Mast
All Rights Reserved

Orange lines are folding/score lines.

The top piece is folded in half and then the bottom folded sections are glued to the floor of the box. This forms a sleeve for holding a gift card or a photo.

The bats are cut in duplicates and their bodies glued together, but not the wings. The wings fold outwards for dimension.

Larger bats are glued to the top of the lid; smaller bats are glued to the floor of the box (on the inside).